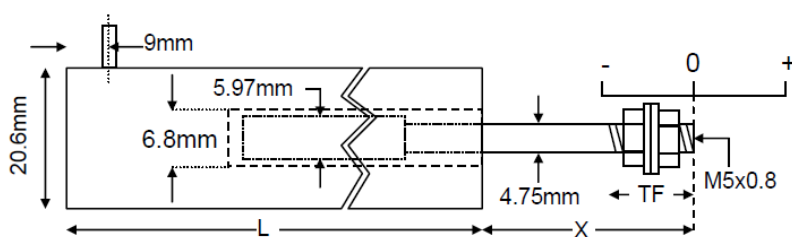


## Trasduttore di Spostamento – Serie LVDT LDC



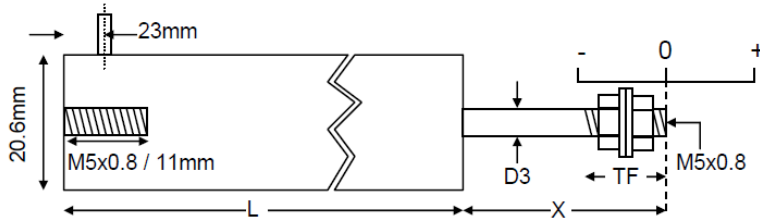
- Amplificatore interno
- Acciaio inossidabile
- Risoluzione infinita
- Alto numero di cicli
- Uscita in tensione (V)
- Accuratezza (best) 0.1% F.S.
- Range minimo  $\pm 12.5\text{mm}$
- Range massimo  $\pm 470\text{mm}$
- Lunghezza 182mm
- Diametro 20.6mm

### Versione senza guida



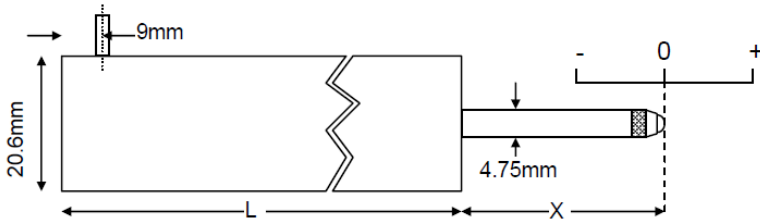
Type	Range	Linearity error (% F.S.)	L	X	Total weight	Armature weight	TF	Inward over-travel
LDC500	$\pm 12.5\text{mm}$	$< \pm 0.5 / \pm 0.25 / \pm 0.1$	175mm	43mm	213g	17g	15mm	16mm
LDC1000	$\pm 25\text{mm}$	$< \pm 0.5 / \pm 0.25 / \pm 0.1$	203mm	69mm	270g	23g	15mm	22mm
LDC2000	$\pm 50\text{mm}$	$< \pm 0.5 / \pm 0.25 / \pm 0.1$	317mm	81mm	369g	37g	15mm	16mm
LDC3000	$\pm 75\text{mm}$	$< \pm 0.5 / \pm 0.25 / \pm 0.1$	430mm	119mm	497g	55g	15mm	29mm
LDC4000	$\pm 100\text{mm}$	$< \pm 0.5 / \pm 0.25 / \pm 0.1$	475mm	132mm	625g	71g	15mm	16mm
LDC6000	$\pm 150\text{mm}$	$< \pm 0.5 / \pm 0.25$	666mm	183mm	852g	100g	15mm	16mm
LDC8000	$\pm 200\text{mm}$	$< \pm 0.5 / \pm 0.25$	856mm	259mm	1.3kg	140g	29mm	27mm

## Versione guidata



Type	Range	Linearity error (% F.S.)	L	X	D3	Total weight	TF	Inward over-travel	Outward over-travel
LDC500C	±12.5mm	<±0.5/±0.25/±0.1	194mm	38mm	4.75mm	340g	15mm	10mm	12mm
LDC1000C	±25mm	<±0.5/±0.25/±0.1	222mm	63mm	4.75mm	398g	15mm	13mm	10mm
LDC2000C	±50mm	<±0.5/±0.25/±0.1	336mm	76mm	4.75mm	511g	15mm	10mm	14mm
LDC3000C	±75mm	<±0.5/±0.25/±0.1	448mm	114mm	4.75mm	625g	15mm	24mm	15mm
LDC4000C	±100mm	<±0.5/±0.25/±0.1	494mm	127mm	4.75mm	767g	15mm	8mm	14mm
LDC6000C	±150mm	<±0.5/±0.25	684mm	178mm	4.75mm	1.0kg	15mm	12mm	17mm
LDC8000C	±200mm	<±0.5/±0.25	875mm	254mm	4.75mm	1.4kg	32mm	22mm	25mm
LDC10000C	±250mm	<±0.5/±0.25	1067mm	305mm	4.75mm	1.7kg	27mm	34mm	35mm
LDC15000C	±375mm	<±0.5	1473mm	406mm	4.75mm	2.2kg	19mm	13mm	13mm
LDC18500C	±470mm	<±0.5	1740mm	508mm	6.00mm	2.6kg	27mm	5mm	33mm

## Versione ritorno a molla



Type	Range	Linearity error (% F.S.)	L	X	Total weight	Spring force at X	Spring rate	Inward over-travel	Outward over-travel
LDC500A	±12.5mm	<±0.5/±0.25/±0.1	182mm	38mm	227g	1.3N	0.2N/cm	1mm	13mm
LDC1000A	±25mm	<±0.5/±0.25/±0.1	210mm	63mm	284g	2.0N	0.3N/cm	3mm	10mm
LDC2000A	±50mm	<±0.5/±0.25/±0.1	324mm	75mm	398g	1.8N	0.2N/cm	8mm	14mm
LDC3000A	±75mm	<±0.5/±0.25/±0.1	436mm	114mm	511g	6.0N	0.4N/cm	15mm	15mm

Specification	
Excitation/supply (acceptable)	5V to 18V dc, 100mA typical
Output	±2.2V
Output load	2kOhms (minimum)
Output ripple	30mV (peak-to-peak)
Electrical output bandwidth	200Hz (flat)
Output impedance	2 Ohms
Temperature coefficient (zero)	±0.01% F.S. /°C (typical)
Temperature coefficient (span)	±0.03% F.S. /°C (typical)
Operating temperature range	-50°C to 70°C
Electrical termination	2m (integral cable) Longer available to order.