

## Trasduttore di Spostamento – Serie LVDT ACT



- Alta precisione
- Vita alta ciclo
- Risoluzione infinita
- In acciaio inox
- Risoluzione infinita
- Dimensioni ridotte
- Alto numero di cicli
- Accuratezza (best) 0.1% F.S.
- Range minimo  $\pm 0.25\text{mm}$
- Range massimo  $\pm 12.5\text{mm}$
- Lunghezza 49mm
- Diametro 9.5mm

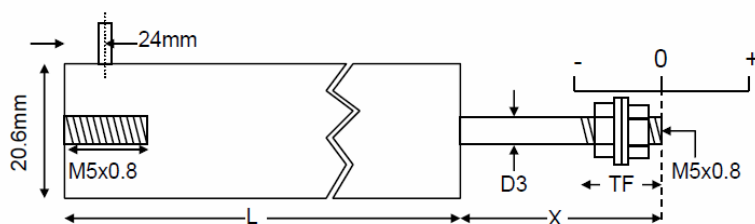
Sono trasduttori per la misura dello spostamento / posizione.

Questo trasduttore utilizza il Variable Differential Transformer (LVDT).

La resistenza del sensore LVDT è che non vi è alcun contatto elettrico attraverso l'elemento sensibile che per l'utente significa dati puliti, risoluzione infinita e una vita molto lunga.

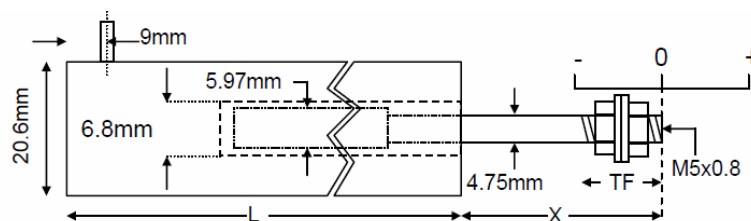
I LVDT sono disponibili sia in versioni di ritorno non guidate o a molla.

## Versione guidata



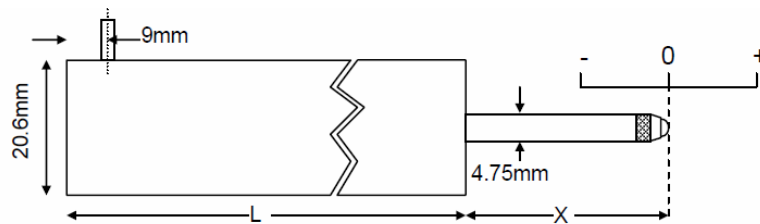
Type	Range	Linearity error (% F.S.)	L	X	D3	Total weight	TF	Inward over-travel	Outward over-travel	Sensitivity (nom)
ACT500C	±12.5mm	<±0.5/±0.25/±0.1	152mm	38mm	4.75mm	284g	15mm	10mm	12mm	0.7V/V
ACT1000C	±25mm	<±0.5/±0.25/±0.1	180mm	63mm	4.75mm	340g	15mm	13mm	10mm	0.9V/V
ACT2000C	±50mm	<±0.5/±0.25/±0.1	295mm	76mm	4.75mm	511g	15mm	10mm	14mm	1.5V/V
ACT3000C	±75mm	<±0.5/±0.25/±0.1	406mm	114mm	4.75mm	653g	15mm	24mm	15mm	1.5V/V
ACT4000C	±100mm	<±0.5/±0.25/±0.1	452mm	127mm	4.75mm	710g	15mm	8mm	14mm	3.2V/V
ACT6000C	±150mm	<±0.5/±0.25	643mm	178mm	4.75mm	1.0kg	15mm	12mm	17mm	2.4V/V
ACT8000C	±200mm	<±0.5/±0.25	833mm	254mm	4.75mm	1.4kg	32mm	22mm	25mm	1.5V/V
ACT10000C	±250mm	<±0.5/±0.25	1030mm	305mm	4.75mm	1.6kg	27mm	34mm	35mm	2.0V/V
ACT15000C	±375mm	<±0.5	1435mm	406mm	4.75mm	2.1kg	19mm	13mm	13mm	3.2V/V
ACT18500C	±470mm	<±0.5	1702mm	508mm	6.00mm	2.5kg	27mm	5mm	33mm	3.6V/V

## versione non guidata



Type	Range	Linearity error (% F.S.)	L	X	Total weight	Armature weight	TF	Inward over-travel	Sensitivity (nom)
ACT500	±12.5mm	<±0.5/±0.25/±0.1	127mm	43mm	170g	17g	15mm	16mm	0.7V/V
ACT1000	±25mm	<±0.5/±0.25/±0.1	155mm	68mm	227g	23g	15mm	22mm	0.9V/V
ACT2000	±50mm	<±0.5/±0.25/±0.1	270mm	81mm	320g	37g	15mm	16mm	1.5V/V
ACT3000	±75mm	<±0.5/±0.25/±0.1	380mm	120mm	454g	55g	15mm	29mm	1.5V/V
ACT4000	±100mm	<±0.5/±0.25/±0.1	427mm	132mm	568g	71g	15mm	16mm	3.2V/V
ACT6000	±150mm	<±0.5/±0.25	617mm	183mm	824g	100g	15mm	16mm	2.4V/V
ACT8000	±200mm	<±0.5/±0.25	808mm	259mm	1.2kg	140g	29mm	27mm	1.5V/V

## Versione ritorno a molla



Type	Range	Linearity error (% F.S.)	L	X	Total weight	Spring force at X	Spring rate	Inward over-travel	Outward over-travel	Sensitivity (nom)
ACT500A	±12.5mm	<±0.5/±0.25/±0.1	133mm	38mm	184g	1.3N	0.2N/cm	1mm	13mm	0.7V/V
ACT1000A	±25mm	<±0.5/±0.25/±0.1	161mm	63mm	227g	2.0N	0.3N/cm	3mm	10mm	0.9V/V
ACT2000A	±50mm	<±0.5/±0.25/±0.1	276mm	75mm	398g	1.8N	0.2N/cm	8mm	14mm	1.5V/V
ACT3000A	±75mm	<±0.5/±0.25/±0.1	387mm	114mm	483g	6.0N	0.4N/cm	15mm	15mm	1.5V/V

Specification	
Excitation/supply (acceptable)	0.5V to 7V rms, 2kHz to 10kHz (sinusoidal)
Excitation/supply (calibrated)	5V rms, 5kHz (sinusoidal)
Output load	100k Ohms
Temperature coefficient (zero)	±0.01% F.S. /°C (typical)
Temperature coefficient (span)	±0.01% F.S. /°C (typical)
Operating temperature range	-50°C to 125°C
Electrical termination	2m (integral cable) Longer available to order.