

## SPIE DI FLUSSO

**Modello FW-1 SINGOLA FINESTRA**

**Modello FW-2 DOPPIA FINESTRA**

### Dati Tecnici

Adatto per liquidi e gas

Materiali a contatto: Finestra- Vetro temperato

Corpo -AISI 316, Guarnizione-Teflon,

Indicatore: 1 - ABS plastica 2 - AISI 316

Temperatura limite: per la sfera 130°C;

per l'indicatore: 1 ABS plastica 93°C 2 PFA 150°C

Pressione limite: FW-1 150 psig (10.34 bar)

FW-2 125psig (8.62 bar)

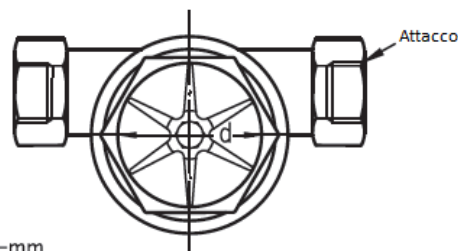
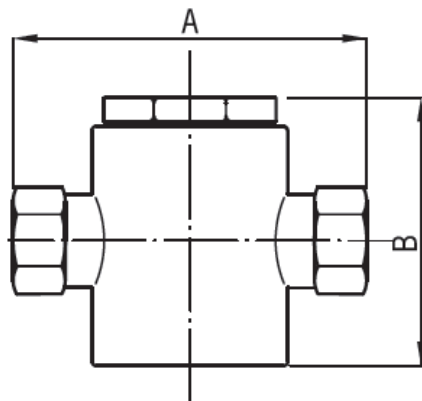
Attacco: filettato

Size: 1/4", 3/8", 1/2", 3/4", 1", 1 1/4", 1 1/2", 2" NPT o PF F



### Dimensioni

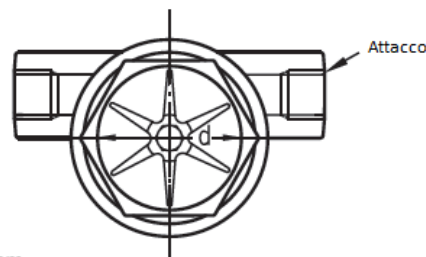
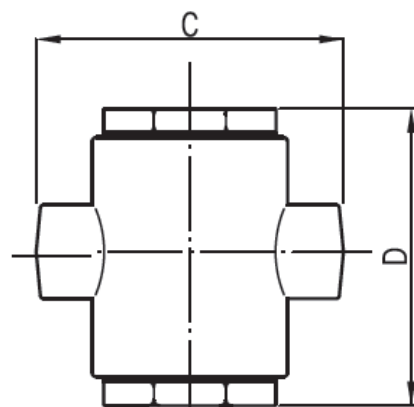
#### SINGOLA FINESTRA



unit=mm

Size	1/4"	3/8"	1/2"	3/4"	1"	1 1/4"	1 1/2"	2"
A	76	76	100	100	109	109	150	150
B	43	43	67	67	72	72	95	95
d	32	32	40	40	40	40	57	57

#### DOPPIA FINESTRA



unit=mm

Size	1/4"	3/8"	1/2"	3/4"	1"	1 1/4"	1 1/2"	2"
C	76	76	100	100	109	109	150	150
D	70	70	80	80	96	96	110	110
d	32	32	40	40	40	40	57	57